

INSTRUCTION MANUAL FOR



GAMESHARK.2
Video Game Enhancer

For use with the PlayStation® 2
Game Console

GAMESHARK®2 VERSION 4 INSTRUCTION MANUAL

Introduction

Congratulations!! You have purchased the ultimate game enhancer for the PlayStation®2 that will provide you with everything that you need to beat the game!! To get the most out of your , please visit us at www.gameshark.com to register your GameShark and receive all of the benefits of being a member and to get all of the hottest codes for the latest games!!!

GameShark®2 Version 4 is the newly updated incredible all-in-one gaming solution for your PlayStation®2. It's more technologically advanced than any other game enhancer on the market today.

GameShark®2 Version 4 now allows you to connect a USB keyboard directly to your PlayStation®2, making it faster and easier to navigate menus, enter and edit cheats.

Unleash the power of GameShark®2 Version 4 to beat even the toughest games, quickly and easily. Access all areas and skip difficult levels, unlock secret characters and vehicles, and supply your game character with infinite lives, health, bullets, all weapons and items. These are just a small sample of the many codes that are now available to you, all thanks to Lik, Skraps and all of the other expert code creation staff at GameShark!

Your GameShark®2 Version 4 comes packed with thousands of pre-loaded codes for almost every PlayStation®2 game. Even better, your GameShark®2 Version 4 will never become out of date – we'll provide you with powerful codes for brand new PlayStation®2 games as soon as they're released. Just visit our website at www.gameshark.com

The PlayStation®2's built-in movie player forms the center of a high quality home entertainment system, with just one shortfall - it won't play DVD movies designe for other regions. GameShark®2 Version 4 incorporates a powerful DVD movie player that allows you to watch movies from any region on your PlayStation®2. No modifications to your console are needed. Just sit back, relax, and enjoy watching any region-coded movie on your PlayStation®2.

And there's more. With 's sophisticated Memory Card Manager you can take full control of your PlayStation®2 game saves, and even free up loads more space on any of your memory cards by "compressing" your game save files. There are also over 250 pre-loaded Game Saves that can be downloaded onto your PS2 memory card (not provided), allowing you to progress even further on those hard-to-beat titles.

GameShark®2 Version 4 is completely future-proof, with support for a full range of exciting add-ons to help you get the most out of your gaming.

GameShark®2 Version 4 is fully compatible with the PS2 SharkPort and USB link cable. Purchasing PS2 SharkPort allows you to organize your Saves and Cheats on your PC with greater ease. The PS2 SharkPort also helps you keep up to date with the latest games by downloading updates from the Web and quickly updating your GameShark®2 Version 4 with the latest Cheats and Game Saves.

Take your gaming to a higher level with GameShark®2 Version 4!

1) Getting Started

Quickly get started with the simple steps below:

1. Insert a game controller into Controller Port 1 or plug a USB keyboard into one of the USB ports on your PlayStation®2 console
2. Firmly insert a PlayStation®2 memory card into memory card slot 1 (only necessary when using codes you have entered yourself, not provided in the pre-existing code list).
3. Turn on your PlayStation®2 console at the rear and press the reset button.
4. Open the drive tray on your console and insert the GameShark®2 Version 4 disc.
5. Close the tray and press the reset button on your console.

2) Controls

Main Menu Screen Controls - Game Controller

1. **D-PAD** - Move up and down the options.
2. **CROSS** - Select highlighted option.
3. **SELECT** - Show version information.

Main Menu Screen Controls - USB Keyboard

1. **UP & DOWN** (arrow-keys) - Move up and down the options.
2. **RETURN or ENTER** - Select the highlighted option.
3. **F1** - Show version information.

Select Game Screen Controls – Game Controller

1. **L1** - Scroll up by four games in the games list.
2. **R1** - Scroll down by four games in the games list.
3. **L2** - Page up to the first game in the games list.
4. **R2** - Page down to the last game in the games list.
5. **UP** - Move up by one game in the games list.
6. **DOWN** - Move down by one game in the games list.
7. **CROSS** - Activate/ De-activate all cheats for the highlighted game, (Activated games will flash). All cheats from the selected game will be activated when selected from the menu, to activate individual cheats you will have to enter the Cheat Browser screen by pressing RIGHT on the D-PAD.
8. **RIGHT** - Cheat Browser - This will take you to a more detailed list of cheats where you can activate or deactivate individual cheats for the selected game. The game name will be displayed at the top of the Cheat Browser screen.
9. **SQUARE** - Edit Game name- This will bring up the Edit Game Name screen that allows you to change the name of the game displayed. Your changes will only be saved if a PlayStation®2 memory card is inserted into memory card slot 1.
10. **CIRCLE** - Add new game
11. **START** - Exit Game Browser and return to Main Menu
12. **SELECT** - Brings up the Game Controller Help Screen

Select Game Screen Controls – USB Keyboard

1. **PAGE UP & PAGE DOWN** - Scroll up or down by four games in the games list.
2. **HOME & END** - Go directly to the first or last game in the games list.
3. **UP & DOWN** (arrow-keys) - Move up or down by one game in the games list.
4. **SPACE BAR** - Activate/ De-activate all cheats for the highlighted game, (Activated games will flash). All cheats from the selected game will be activated when selected from the menu, to activate individual cheats you will have to enter the Cheat Browser screen by pressing the "RIGHT" (arrow-key) on the keyboard.
5. **RIGHT** (arrow-key) - Cheat Browser - This will take you to a more detailed list of cheats where you can activate or deactivate individual cheats for the selected game. The game name will be displayed at the top of the Cheat Browser screen.
6. **RETURN or ENTER** - Edit Game name - This will bring up the Edit Game name

screen that allows you to change the name of the game displayed. Your changes will only be saved if a PlayStation®2 memory card is inserted into memory card slot 1.

7. **INSERT** - Add new game
8. **ESCAPE** - Exit Game Browser and return to Main Menu
9. **F1** - Brings up the USB Keyboard Help Screen.

The help screen looks like this.



Cheat Browser Controls – Game Controller

1. **START** - Exit Cheat Browser and return to Main Menu
2. **LEFT** - Exit Cheat Browser and return to Select Game Browser
3. **CROSS** - Activate/ De-activate cheat (activated cheats will flash)
4. **SQUARE** - Edit Cheat Name – This will bring up the Edit Cheat name screen that allows you to change the name of the cheat displayed. Your changes will only be saved if a PlayStation®2 memory card is inserted into memory card slot 1.
5. **CIRCLE** - Add New Cheat – This allows you to add a new Cheat Name.
6. **SELECT** - Brings up the Game Controller Help Screen

Cheat Browser Controls – USB Keyboard

1. **ESCAPE** - Exit Cheat Browser and return to Main Menu
2. **LEFT** (arrow-key) - Exit Cheat Browser and return to Select Game Browser
3. **SPACE BAR** - Activate/ De-activate cheat (activated cheats will flash)
4. **RETURN or ENTER** - Edit Cheat Name - This will bring up the Edit Cheat name screen that allows you to change the name of the cheat displayed. Your changes will only be saved if a PlayStation®2 memory card is inserted into memory card slot 1.
5. **INSERT** - Add New Cheat - This allows you to add a new Cheat Name.
6. **F1** - Brings up the USB Keyboard Help Screen

3) Main Menu

The Main Menu looks like this.



The Main Menu is comprised of the following options:

1. Start Game
2. Select Game
3. DVD Player
4. Memory Card Manager
5. GameShark Saves

If you are using a game controller, use the D-Pad to highlight one of the options above, and then press the "CROSS" button to make your selection.

If you are using a USB keyboard connected to your PlayStation®2, use the "UP" & "DOWN" (arrow-keys) to highlight one of the options above, and then press the "RETURN" or "ENTER" key to make your selection.

On the Main Menu screen you will also see the number of games/codes available on your GameShark®2 Version 4. These numbers will increase accordingly every time you add new codes to your GameShark®2 Version 4 and save them to memory card.

If you are on the Main Menu screen and you do not touch your controller or USB keyboard for 10 seconds, it will automatically "rain" on the screen for 5 seconds, then stop. This is repeated whenever you leave your controller.

SPECIAL FEATURE

You can create shapes and ripples in the "water" background of the Main Menu. Simply press and hold the L3 button (left analogue stick) and move it around. You will notice a small dot moves around the screen making shapes.

You can also make it "rain" in the background by pressing and holding the R3 button (right analogue stick)

4) Start Game

When you select this option from the Main Menu you will be prompted to insert the game disc.

If you are using a game controller, press "CROSS" to start the game or "TRIANGLE" to cancel this selection and return to the Main Menu.

If you are using a USB keyboard, press "Y" to start the game or press "N" to cancel this selection and return to the Main Menu.

5) Select Game

This option takes you to the "Select Game" screen, which contains the list of all game titles supported by the GameShark®2 Version 4.

All Game Titles in your library are listed alphabetically. Your code library is completely customizable - in this manual you'll learn how to add, edit and delete game titles and codes to form your own unique collection of Cheat Codes.

The Select Game Screen looks like this.



Use the D-PAD to scroll up and down through the list of games on-screen. You can also use the shoulder buttons L1 and R1 on your controller to scroll up and down through the list faster. If you are using a USB keyboard, use the "UP" or "DOWN" arrow-keys to scroll up or down through the list of games on-screen. You can also use the "PAGE-UP" and "PAGE-DOWN" keys to scroll up or down through the list faster.

To view the cheats for the highlighted game, simply press "RIGHT" on the D-Pad of your game controller or press the "RIGHT" arrow-key on the USB keyboard to enter the "Cheat Browser" screen (see next section), where a full list of cheats for the selected game will appear on-screen

To delete a game that you have added, press the "TRIANGLE" button on the game controller or press the "DELETE" key on the USB keyboard. You cannot delete games that come pre-loaded on the GameShark@2 Version 4 disc. To edit a Game name, press the "SQUARE" button on the game controller or press the "RETURN" or "ENTER" key on the USB keyboard.

To add a new game (see "Adding a Game Title below"), press the "CIRCLE" button on the game controller or press the "INSERT" key on the USB keyboard.

To return to the Main Menu, press the "START" button on the game controller or press the "ESCAPE" key on the USB keyboard. This will also save any changes that you have made.

PLEASE NOTE You can only save changes you have made if you have a PS2 memory card inserted in memory card slot 1.

Top Tip: Press the "SELECT" button on the game controller or press the "F1" key on the USB keyboard at any time while on the "Select Game" screen to bring up the Help Menu.

a) Adding a New Game Title

When on the "Select Game" screen, to go to the "Add a Game" screen where you will find a virtual keyboard, press "CIRCLE" on the game controller or press the "INSERT" key on the USB keyboard. Your Game Name can be up to 25 characters in length.

To enter a new game title, follow the steps below.

Game Controller

1. Use the D-Pad to move through the keyboard on screen.
2. **R1** - Emulates the right arrow key on a keyboard.
3. **L1** - Emulates the left arrow key on a keyboard.

4. **R2** - Emulates the end key of a keyboard (goes directly to the end of the text).
5. **L2** - Emulates the home key of a keyboard (goes directly to the beginning of the text).
6. **CROSS** - Selects the character highlighted.
7. **SQUARE** - Emulates the space bar function of a keyboard.
8. **TRIANGLE** - Emulates the delete/backspace key of a keyboard.
9. **START** - Saves any changes that you have made.

USB Keyboard

1. Enter text, as you would normally use a keyboard.
2. **LEFT** (arrow-key) - Move the text cursor one place to the left.
3. **RIGHT** (arrow-key) - Move the text cursor one place to the right.
4. **END** - Moves the text cursor directly to the end of the text.
5. **HOME** - Moves the text cursor directly to the beginning of the text.
6. **F5, F6, F7, F8** (function keys) - Enters **CROSS, CIRCLE, SQUARE, TRIANGLE**
7. **RETURN** or **ENTER** - Saves any changes that you have made.

Top Tip: Pressing the "SELECT" button on the game controller or "CAPS-LOCK" on the USB keyboard will toggle between upper and lower case characters. The Help bar is always displayed at the bottom of the screen.

b) Editing an Existing Game Title

You cannot delete the Game names, Cheats or codes originally stored on the GameShark®2 Version 4. However, you can edit the Game Names and Cheats that are on the disc. You may want to use this feature to add cheats to existing games.

You can only edit or delete the Game Names, Cheat Descriptions or Cheat Codes that you have added yourself. These are purple in color.

To edit an existing Game Title, follow the steps below.

Game Controller

1. Use the D-Pad on your controller to highlight Select Game on the Main Menu and press the "CROSS" button on your controller.
2. While on the Select Game screen press the "UP" or "DOWN" buttons on the D-Pad to highlight the Game Title you wish to edit.
3. Press the "SQUARE" button on your controller to enter the Edit Game Name screen.
4. To edit the Game Name use the D-Pad on your controller to move the cursor around the virtual-keyboard and press the "CROSS" button on your controller to use that character.
5. If you wish to delete a character press the "TRIANGLE" button on your controller. Repeat this step to delete the entire Game Name.
6. To move along the characters in the Game Name one at a time press L1 or R1 on your controller. To move to the start or the end of the Game Name, press L2 or R2 on your controller.
7. Once you have changed the Game Name press the "START" button on your controller. You will be taken to the "Select Game" screen.
8. Press the "START" button on your controller again and a screen will appear asking you if you want to "Overwrite cheats?" If you want to save the changes you have made to your PS2 memory card, press the "CROSS" button on your controller.
9. If you decide not to change the Game Name press the "TRIANGLE" button on your controller. This will take you back to the Main Menu. No changes will be made to your .

Top Tip: The Help bar is always displayed at the bottom of the screen.

USB Keyboard

1. Use the "UP" & "DOWN" arrow-keys on the USB keyboard to highlight Select Game on the Main Menu and press the "RETURN" or "ENTER" key.
2. While on the Select Game screen use the "UP" or "DOWN" arrow-keys to highlight the Game Title you wish to edit.
3. Press the "RETURN" or "ENTER" key to enter the Edit Game Name screen.
4. To edit the Game Name use the USB keyboard as a normal keyboard to enter and delete text. You will only be able to enter the characters available on the virtual keyboard.
5. If you wish to delete a character press the "DELETE" key on the USB keyboard. Repeat this step to delete the entire Game Name.
6. To move along the characters in the Game Name one at a time press the "LEFT" or "RIGHT" arrow-keys on the USB keyboard. To move to the start or the end of the Game Name use the "HOME" or "END" keys.
7. Once you have changed the Game Name press the "RETURN" or "ENTER" key on the USB keyboard. You will be taken to the "Select Game" screen.
8. Press the "ESCAPE" key on the USB keyboard and a screen will appear asking you if you want to "Overwrite cheats?" If you want to save the changes you have made to your PS2 memory card, press the "Y" key.
9. If you decide not to change the Game Name press the "N" key on the USB keyboard. This will take you back to the Main Menu. No changes will be made to your GameShark®2 Version 4.

c) Cheat Select

Every game has its own individual list of cheats, which will only work with that particular Game and no other.

To select various Cheat Codes for the game you wish to play, follow the steps below.

Game Controller

1. Use the D-Pad on your controller to highlight Select Game on the Main Menu and press the "CROSS" button on your controller.
2. On the "Select Game" screen, use "UP" & "DOWN" on the D-Pad to highlight the game that you wish to activate individual cheats for, then press "RIGHT" on the D-Pad.
3. You will now see the "Cheat Browser" screen that displays all the available cheats for the selected game.
4. Press "UP" & "DOWN" on the D-Pad to scroll through the cheats and press "CROSS" to activate/ de-activate a highlighted cheat. If a cheat is activated it will flash.
5. Once you have activated all the cheats you want enabled, press the "START" button. This will take you to the Main Menu.
6. Use the D-Pad to highlight "Start Game" and press "CROSS". When prompted you should remove the GameShark®2 Version 4 disc, insert the PlayStation®2 game, and press the "CROSS" button to begin playing. Or press "TRIANGLE" to exit this screen.

USB Keyboard

1. Use the "UP" & "DOWN" arrow-keys to highlight Select Game on the Main Menu and press the "RETURN" or "ENTER" key on the USB keyboard.
2. On the "Select Game" screen, use the "UP" & "DOWN" arrow-keys to highlight the game that you wish to activate individual cheats for, then press "RIGHT" arrow-key.
3. You will now see the "Cheat Browser" screen that displays all the available cheats for the selected game.
4. Use the "UP" & "DOWN" arrow-keys on the USB keyboard to scroll through the

cheats and press the "SPACE BAR" to activate/ de-activate a highlighted cheat. If a cheat is activated it will flash.

5. Once you have activated all the cheats you want enabled, press the "ESCAPE" key on the USB keyboard. This will take you to the Main Menu.
6. Use the "UP" & "DOWN" arrow-keys to highlight "Start Game" and press "RETURN" or "ENTER". When prompted you should remove the GameShark®2 Version 4 disc, insert the PlayStation®2 game, and press "Y" button to begin playing. Or press "N" to exit this screen.

Important: All games require a Mastercode. The Mastercode will automatically activate (and flash) when you select any cheats for a game. This is normal. New Cheats will always be provided with Mastercodes.

PLEASE NOTE

Some games may behave in an unusual manner when Cheat Codes are activated. This is due to the Cheat Code changing values in the games memory, and causes it to do things that it does not normally do. Sometimes if two or more codes are selected together they may cause conflict in the game. There is no way to avoid this. If you experience problems during gameplay then reboot GameShark®2 Version 4 and try playing again with fewer codes selected. Also try using different combinations of codes or just one code at a time.

Use of Splinter Cell "Enemies Cannot Move" Cheat

The "Enemies Cannot Move" Cheat is should not be used on level 3 of Splinter Cell. This is because one of the enemies has to move in order for you to complete the level. It may cause the game to crash if the above event occurs.

d) Add New Cheat Descriptions

GameShark®2 Version 4 allows you to add new cheats* for your favorite PlayStation®2 games! New cheats are added by first adding the Game Name then a Cheat Description followed by the Cheat Code(s).

New Games added are listed alphabetically and are colored purple. GameShark®2 Version 4 will automatically detect any changes you have made and will ask if you wish to save the changes when you return to the Main Menu.

*New Cheats are stored on your PlayStation®2 memory card and this is required to save any new cheats entered. GameShark®2 Version 4 will automatically check your memory card while loading for new cheats and update the Game/Cheat list.

Ensure you have added a new "Game Name" as described above in section 5(a) "Adding a New Game Title".

You should enter a Cheat Description that reflects what the Cheat Code does, for example "Infinite Lives" "Infinite Health", "Unlock All Weapons", etc. Your description can be up to 25 characters long.

To add a new Cheat Description, follow the steps below.

Game Controller

1. Use the D-Pad to highlight the Game Name you added, then press "RIGHT" on the D-Pad and you will be taken to the Cheat Browser screen.
2. Press the "CIRCLE" button on your controller to add a new cheat description.
3. Use the L1 and R1 shoulder buttons on your game controller to move left and

right through the game name characters on the virtual keyboard.

4. Press the "TRIANGLE" button to delete characters.
5. As before, by pressing the "SELECT" button" on the virtual keyboard will toggle between upper and lower case characters.
6. Once the desired Cheat Description has been entered, press the "START" button to confirm or if you wish to cancel and exit the "Add New Cheat" screen without saving, press the "O" button on your game controller.

USB Keyboard

1. Use the "UP" & "DOWN" arrow-keys to highlight the Game Name you added, then press "RIGHT" arrow-key on the USB keyboard and you will be taken to the Cheat Browser screen.
2. Press the "INSERT" button on your USB keyboard to add a new cheat description.
3. Use the USB keyboard as you would with a normal keyboard to enter a cheat description. You will only be able to enter the characters available on the virtual keyboard.
4. If you wish to delete a character press the "DELETE" or "BACKSPACE" key on the USB keyboard.
5. To move along the characters in the Cheat Description one at a time press the "LEFT" or "RIGHT" arrow-keys on the USB keyboard. To move to the start or the end of the Cheat Description use the "HOME" or "END" keys.
6. Once the desired Cheat Description has been entered, press the "RETURN" or "ENTER" key on the USB keyboard to confirm or if you wish to cancel and exit the "Add New Cheat" screen without saving, press the "ESCAPE" button on your game controller.

Top Tip: See the "Obtaining New Codes" section of this manual for details of where to find new codes for your GameShark@2 Version 4. The Help bar is always displayed at the bottom of the screen when entering with the virtual keyboard.

e) Adding Cheat Codes to an Existing Game Title

The Cheat Code is the most important part of the cheating process. Please ensure you enter the Cheat Code (s) correctly or the cheat may not work. (See Troubleshooting)

To add Cheat Codes to an existing Game Title, follow the steps below.

Game Controller

1. Use "UP" & "DOWN" on the D-Pad to highlight Select Game from the Main Menu and press the "CROSS" button on your controller. This will take you to the Select Game screen.
2. Use "UP" & "DOWN" on the D-Pad to highlight the existing Game title you want to add cheats to, then press "RIGHT" on the D-Pad. This will take you to the Cheat Descriptions screen.
3. Press the "CIRCLE" button on the Cheat Description screen. This will let you add a new Cheat description.
4. Add a new Cheat description.
5. Press the "START" button on your controller.
6. Press "RIGHT" on the D-Pad.
7. To add a new Cheat Code press the "CIRCLE" button. You will now see the "Enter Cheat Code" screen.
8. To enter the Cheat Code use the D-Pad on your controller to highlight a character and press "CROSS". (You will notice there are only characters 0-9 and A-F).
9. If you wish to delete a character press the "TRIANGLE" button on your controller. To move along the characters in the Cheat Code one at a time, press L1 or R1 on your controller. To move to the start or the end of the Cheat Code press L2 or R2

R2 on your controller.

10. Once you have entered the Cheat Code press the "START" button on your controller. If the Cheat Description you are entering has more than one line of Cheat Codes enter the first line as above then repeat steps 7-9 to enter the forthcoming Cheat Code lines.
11. Press the "START" button when you have finished entering the last line of the Cheat Code.
12. Press the "START" button again. A screen will appear asking if you want to "Overwrite cheats?" If you want to save the cheat you have just added, press the "CROSS" button on your controller. If you don't want to save the cheat you have typed in, press the "TRIANGLE" button on your controller. You have now added a Cheat Code to an existing Game Title.

USB Keyboard

1. Use the "UP" & "DOWN" arrow-keys on the USB keyboard to highlight Select Game from the Main Menu and press the "ENTER" or "RETURN" key. This will take you to the Select Game screen.
2. Use "UP" & "DOWN" arrow-keys on the USB keyboard to highlight the existing Game title you want to add cheats to, then press the "RIGHT" arrow-key. This will take you to the Cheat Descriptions screen.
3. Press the "INSERT" key while on the Cheat Description screen. This will let you add a new Cheat description.
4. Enter a new Cheat description.
5. Press the "ENTER" or "RETURN" key on your USB keyboard.
6. Press the "RIGHT" arrow-key.
7. To add a new Cheat Code press the "INSERT" key. You will now see the "Enter Cheat Code" screen.
8. Use the USB keyboard as you would with a normal keyboard to enter a Cheat Code. You will only be able to enter the characters available on the virtual keyboard.
9. If you wish to delete a character press the "DELETE" or "BACKSPACE" key on the USB keyboard. To move along the characters in the Cheat Description one at a time press the "LEFT" or "RIGHT" arrow-keys on the USB keyboard. To move to the start or the end of the Cheat Description use the "HOME" or "END" keys.
10. Once you have entered the Cheat Code press the "ENTER" or "RETURN" key on your USB keyboard. If the Cheat Description you are entering has more than one line of Cheat Codes enter the first line as above then repeat steps 7-9 to enter the forthcoming Cheat Code lines.
11. Press "ENTER" or "RETURN" when you have finished entering the last line of the Cheat Code.
12. Press the "ESCAPE" key. A screen will appear asking if you want to "Overwrite cheats?" If you want to save the cheat you have just added, press "Y" on your USB keyboard. If you don't want to save the cheat you have typed in, press "N" on your USB keyboard. You have now added a Cheat Code to an existing Game Title.

Top Tip: Before you add new codes, a game title must already exist in your 's code library. See section 5(a) "Adding a New Game Title" for details on how to add a new game title. The Help bar is always displayed at the bottom of the screen.

f) Editing an Existing Cheat Description

To edit an existing Cheat Description, simply follow the steps below.

Game Controller

1. Use the D-Pad to highlight the Cheat Description you wish to edit and press

the "SQUARE" button.

2. Using the virtual keyboard as before, edit the Cheat Description as you wish. When you are happy with the changes you have made press the "START" button.
3. You will return to the "Select Game" screen.
4. Press the "START" button again.
5. You will be asked if you wish to "Overwrite cheats?" Press "CROSS" to save the changes you have made or press "TRIANGLE" if you don't want to save the changes.

USB Keyboard

1. Use the "UP" & "DOWN" arrow-keys to highlight the Cheat Description you wish to edit and press the "ENTER" or "RETURN" key.
2. Using the USB keyboard as before, edit the Cheat Description as you wish. When you are happy with the changes you have made press "ENTER" or "RETURN"
3. You will return to the "Select Game" screen.
4. Press the "ESCAPE" key.
5. You will be asked if you wish to "Overwrite cheats?" Press "Y" to save the changes you have made or press "N" if you don't want to save the changes.

Top Tip: The Help bar is always displayed at the bottom of the screen.

g) Editing an Existing Cheat Code

You can only edit the Cheat Codes that you have added yourself (These are the codes you can view). The Cheat Codes built-in to the GameShark@2 Version 4 cannot be edited.

To edit an existing Cheat Code, follow the steps below.

Game Controller

1. If you want to edit a Cheat Code, simply use the D-Pad to highlight the Cheat Description that the Cheat Code is for and press "RIGHT" on the D-Pad.
2. Highlight the Cheat Code you wish to edit and press the "SQUARE" button.
3. Using the virtual keyboard as before, edit the Cheat Code as you wish. When you are happy with the changes you have made press the "START" button.
4. You will return to the "Cheat Code" screen.
5. Press the "START" button again.
6. You will be asked if you wish to "Overwrite cheats?" Press "CROSS" to save the changes you have made or press "TRIANGLE" if you don't want to save the changes.

USB Keyboard

1. If you want to edit a Cheat Code, simply use the "UP" & "DOWN" arrow-keys to highlight the Cheat Description the Cheat Code is for and press the "RIGHT" arrow-key.
2. Highlight the Cheat Code you wish to edit and press the "ENTER" or "RETURN" key.
3. Using the USB keyboard as before, edit the Cheat Code as you wish. When you are happy with the changes you have made press "ENTER" or "RETURN"
4. You will return to the "Cheat Code" screen.
5. Press the "ESCAPE" key.
6. You will be asked if you wish to "Overwrite cheats?" Press "Y" to save the changes you have made or press "N" if you don't want to save the changes.

Top Tip: The Help bar is always displayed at the bottom of the screen.

h) Deleting a Game Name, Cheat Description or Cheat Code

You can only delete a Game Name, Cheat Description or Cheat Code that you have added yourself (these are purple). The Game Name, Cheat Descriptions or Cheat Codes that are built in to GameShark®2 Version 4 cannot be deleted.

The simple steps below explain how to delete a Game Name, Cheat Description or Cheat Code.

Game Controller

Simply highlight the Game Name, Cheat Description or Cheat Code you wish to delete and press the "TRIANGLE" button. You will be asked to confirm this action. Please think carefully before deleting a Game Name, as you will also lose all the code associated with it.

USB Keyboard

Simply highlight the Game Name, Cheat Description or Cheat Code you wish to delete and press the "DELETE" key. You will be asked to confirm this action. Please think carefully before deleting a Game Name, as you will also lose all the code associated with it.

6) Obtaining New Codes

There are several ways to get new codes and keep your GameShark®2 Version 4 up-to-date:

Web Site - Visit www.gameshark.com for all the latest GameShark®2 Version 4 codes plus news, previews, reviews, discussion boards, technical support and much more. You can even buy Mad Catz products online from the 100% secure GameShark Shop. Magazines – Several top PlayStation®2 magazines print codes for GameShark®2 Version 4.

Top Tip: We only guarantee GameShark®2 Version 4 codes that are obtained from the sources listed above. Codes designed for other devices will NOT work with GameShark®2 Version 4. Similarly, GameShark®2 Version 4 codes will NOT function with any other device.

7) GameShark Memory Manager and Game Saves

's Memory Manager feature expands the capabilities of your PlayStation®2 memory cards, allowing you to fit up to 7 times more data onto each memory card! This powerful management utility allows you to copy, zip (compress), delete, un-zip (uncompress) and format your PlayStation®2 game saves.

The Game Saves section includes over 800+ Game saves taken from over 100+ various games, giving you another way to beat your game. You can use the GameShark Memory Manager to utilise these saves to the best of your advantage!

a) Game Saves

Select the GameShark Memory Manager/ Game Saves option from 's Main Menu.

The Memory Manager/ Game Saves screen will now appear. It looks like this.



Game Controller Controls

R2 – Select GameShark Memory Manager panel.

L2 – Select Game Saves panel.

UP – Move up one Game Save.

DOWN – Move down one Game Save.

SELECT – Bring up the help screen.

Game Controller Controls when on Game Saves (Left Panel)

CIRCLE – View Game Save description.

CROSS – Copy Game save from the disc to a memory card.

Game Controller Controls when on Memory Manager (Right Panel)

R2 – Toggle between memory card 1 and memory card 2.

CROSS – Copy highlighted save to the other PS2 memory card (If one is inserted).

CIRCLE – View highlighted Game Save details.

TRIANGLE – Delete highlighted Game Save (You will be asked to confirm this action)

SQUARE – zip/ un-zip highlighted save. (A zipped save cannot be zipped again)

L1 + TRIANGLE – Format PS2 memory card (You will be asked to confirm this action)

Top Tip: Press "SELECT" on your game controller to bring up the help screen.

USB Keyboard Controls

RIGHT (arrow-key) – Select GameShark Memory Manager panel.

LEFT (arrow-key) – Select Game Saves panel.

UP (arrow-key) – Move up one Game Save.

DOWN (arrow-key) – Move down one Game Save.

F1 – Bring up the help screen.

USB Keyboard Controls when on Game Saves (Left Panel)

I – View Game Save description.

C – Copy Game save from the disc to a memory card.

USB Keyboard Controls when on Memory Manager (Right Panel)

RIGHT (arrow-key) – Toggle between memory card 1 and memory card 2.

C – Copy highlighted save to the other PS2 memory card (If one is inserted).

I – View highlighted Game Save details.

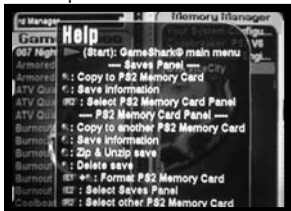
DELETE – Delete highlighted Game Save (You will be asked to confirm this action)

Z – zip/ un-zip highlighted save. (A zipped save cannot be zipped again)

F12 – Format PS2 memory card (You will be asked to confirm this action)

Top Tip: Press "F1" on your USB keyboard to bring up the help screen.

The help screen looks like this.



The left side of the screen is the "Game Saves" panel. This is a list of Game saves for various games. These are displayed in alphabetical order in Orange text, as seen above.

Copying to your Memory Card from the Game Saves Panel

To copy a Games Save from the Game Saves Panel to your memory card, simply follow the steps below.

Game Controller

1. Use the D-Pad to move up and down the list to highlight a Game save. Press the "CIRCLE" button on your controller to check the description of that save.
2. A save description will be displayed e.g. "All Levels Unlocked". Press "CROSS" to close the description box.
3. Repeat steps 1-3 until you find a game save that you want to copy to your memory card.
4. If you want to copy the Game Save to memory card you have selected (see screen diagram 7(a) above) press the "CROSS" button.
5. Your save will now be copied onto your selected PS2 memory card.

USB Keyboard

1. Use the "UP" and "DOWN" arrow-keys to move up and down the list to highlight a Game save. Press "I" on your USB keyboard to check the description of that save.
2. A save description will be displayed e.g. "All levels unlocked". Press "ENTER", "RETURN" or "ESCAPE" to close the description box.
3. Repeat steps 1-3 until you find a game save that you want to copy to your memory card.
4. If you want to copy the Game Save to memory card you have selected (see screen diagram 7(a) above) press "C".
5. Your save will now be copied onto your selected PS2 memory card.

PLEASE NOTE

Some games will not allow for multiple game saves of the same game to be stored on a single memory card, so you may have to store multiple saves for certain games on separate memory cards. If you are using the Mad Catz Memory Card Expander, do not press the memory expansion switch while the GameShark Memory Manager is carrying out any operations!

Top Tip: Another way of storing more than 1 save per game on your memory card is to zip your existing saves for your particular game, then download your new save. This will allow you to have multiple saves for the same game on your memory card.

b) Copying a File from One Memory Card to Another

To copy a file from one memory card to another follow the simple steps below-

Game Controller

1. Make sure you are on the Memory Manager side of the screen.
2. To switch between memory cards in slot 1 & 2 press the R2 button. You will see the number change in the top right of the screen. 1 means you are viewing the saves on the memory card inserted in slot 1, the number 2 means you are viewing the saves on the memory card inserted in slot 2.
3. Use the D-Pad to highlight the save you wish to copy.
4. Press the "CROSS" button. The save will now copy from one memory card to another.

USB Keyboard

1. Make sure you are on the Memory Manager side of the screen.
2. To switch between memory cards in slot 1 & 2 press the "RIGHT" arrow-key. You will see the number change in the top right of the screen. 1 means you are viewing the saves on the memory card inserted in slot 1, the number 2 means you are viewing the saves on the memory card inserted in slot 2.
3. Use the "UP" and "DOWN" arrow-keys to highlight the save you wish to copy.
4. Press "C" and the save will now copy from one memory card to another.

PLEASE NOTE

Some games will not allow for multiple game saves of the same game to be stored on a single memory card, so you may have to store multiple saves for certain games on separate memory cards. If you are using the Mad Catz Memory Card Expander, do not press the memory expansion switch while the GameShark Memory Manager is carrying out any operations!

Top Tip: Another way of storing more than 1 save per game on your memory card is to zip your existing saves for your particular game, then download your new save. This will allow you to have multiple saves for the same game on your memory card.

c) Deleting a File

This permanently erases files on the currently selected memory device. Use this feature with caution!

Follow the steps below to delete a file:

Game Controller

1. Make sure you are on the Memory Manager side of the screen.
2. Use the D-Pad to highlight the save that you wish to delete.
3. Press the "TRIANGLE" button.
4. You will be asked to confirm the file delete. Press the "CIRCLE" button to proceed and delete the file.
5. Press "CROSS" if you do not want to delete the file.

USB Keyboard

1. Make sure you are on the Memory Manager side of the screen.
2. Use the "UP" and "DOWN" arrow-keys to highlight the save that you wish to delete.
3. Press the "DELETE" key.
4. You will be asked to confirm the file delete. Press "Y" to proceed and delete the file.
5. Press "N" if you do not want to delete the file.

Once this process is complete, GameShark®2 Version 4 will refresh the currently selected memory cards contents on-screen to reflect the changes you have just made.

d) Zipping a File

Zipping is a powerful and incredibly useful feature that compresses files on any PlayStation®2 memory device, freeing up loads more storage space! It works with all PlayStation®2 compatible memory cards. Zipped files will show as an Aqua color. Normal save data will show as Orange and corrupt save data will show as Red.

Follow the steps below to zip a save file on your memory card:

Game Controller

1. Make sure you are on the Memory Manager side of the screen.
2. Use the D-Pad to highlight the save you wish to zip.
3. Press the "SQUARE" button on your controller. If the file cannot be zipped a window will appear saying, " This type of file is unsupported".
4. If the file can be zipped it will turn from Orange in color to Aqua.

USB Keyboard

1. Make sure you are on the Memory Manager side of the screen.
2. Use the "UP" and "DOWN" arrow-keys to highlight the save you wish to zip.
3. Press the "Z" key on your USB keyboard. If the file cannot be zipped a window will appear saying, " This type of file is unsupported".
4. If the file can be zipped it will turn from Orange in color to Aqua.

PLEASE NOTE

Not all Game save data can be zipped. If this is the case a window will appear and tell you. Nothing will happen to your original game save. If you are using the Mad Catz Memory Card Expander, do not press the memory expansion switch while the GameShark Memory Manager is carrying out any operations!

If a window appears stating " An error has occurred while reading the save" this means there are errors in the game save data. Press "CROSS" on your game controller or "ESCAPE" on your USB keyboard to close the window. Your original save will not be affected.

Once this process is complete, GameShark®2 Version 4 will refresh the currently selected memory device's contents on-screen to reflect the changes you have just made.

e) Un-zipping a File

To use a zipped file you will need to un-zip it first. You cannot, for example, load a compressed game save into a game - the game will not recognize any zipped file. Once you have un-zipped (un-compress) your game save, it can be used as normal. The process for un-zipping a file is exactly the same as "Zipping a File" as detailed above.

f) Formatting your Memory card

When you format your memory card it deletes all save data that is on your memory card, and this is lost forever. Please use the Format feature with caution!

Follow the steps below to Format your memory card:

Game Controller

1. Make sure you are on the Memory Manager side of the screen.
2. Press the R2 button to select the memory card you want to format.
3. Press the "TRIANGLE" button and the L1 button at the same time.

4. You will be asked to confirm if you wish to Format your memory card.
5. Press the "CIRCLE" button if you wish to continue and Format your memory card.
6. Press the "CROSS" button if you do not want to Format your memory card.

USB Keyboard

1. Make sure you are on the Memory Manager side of the screen.
2. Press the "RIGHT" arrow-key to select the memory card you want to format.
3. Press "F12" to format your memory card.
4. You will be asked to confirm if you wish to Format your memory card.
5. Press "Y" if you wish to continue and Format your memory card.
6. Press "N" if you do not want to Format your memory card.

Once this process is complete, GameShark®2 Version 4 will refresh the currently selected memory device's contents on-screen to reflect the changes you have just made.

PLEASE NOTE

If you are using the Mad Catz Memory Card Expander, do not press the memory expansion switch while the GameShark Memory Manager is carrying out any operations!

g) Viewing GameShark Memory Manager Saves on your PS2 Browser Screen
When using your PS2 Browser Screen (refer to the manual supplied with your PS2) to view your memory card saves, you can identify the different types of saves by simply looking at the type of 3D icon. Any saves created by the "GameShark Memory Manager" can be easily identified.

'Green Cube' icons are zipped "GameShark Memory Manager" saves.
'GameShark Logo' icons are un-zipped "GameShark Memory Manager" saves.

However, you will have to select the different icons and read the save description to identify which game the save is related to.

8) DVD Movie Player

DVD Region Free allows you to play DVD's from all over the world, and will increase the number of DVD's you are able to watch on your PS2.

Buy the latest movies from the Japan or Europe and watch them on your US PS2 Console!

Getting Started

To watch any region DVD on your PS2 console, follow the simple steps below-

Game Controller

1. On the main menu screen of the GameShark®2 Version 4 use the D-Pad of your controller to highlight "DVD Region Free".
2. Press the "CROSS" button on your controller.
3. You will now see the DVD Region Free Interface.

USB Keyboard

1. On the main menu screen of the GameShark®2 Version 4 use the "UP" and "DOWN" arrow-keys on your USB keyboard to highlight "DVD Region Free".
2. Press, "ENTER" or "RETURN".
3. You will now see the DVD Region Free Interface.

You will now see the DVD Region Free Interface-



Play Your DVD's

To play your DVD, no matter which region it is from, simply follow the simple steps below-

Game Controller

1. Use the D-Pad to move the cursor to highlight "Region 1".
2. Press "LEFT" and "RIGHT" on the D-Pad to change to the region DVD you want to play.
3. Press "UP" on the D-Pad of your controller to highlight "Play Disc".
4. Press the "CROSS" button on your controller.
5. Follow the on-screen instructions and insert your DVD movie.

USB Keyboard

1. Use the "UP" and "DOWN" arrow-keys to move the cursor to highlight "Region 1".
2. Press the "LEFT" & "RIGHT" arrow-keys to change to the region DVD you want to play.
3. Alternatively you can use the keys 1-6 as a short cut to change the region setting.
4. Highlight "Play Disc".
5. Press the "ENTER" or "RETURN"
6. Follow the on-screen instructions and insert your DVD movie.

PLEASE NOTE

When using DVD Region Free on the PS2 Model number SCPH-3001, your PS2 may return to its built-in browser menu after selecting "Play Disc". If this happens, simply highlight the Gold DVD disc in the browser and press the "CROSS" button. Your DVD will now play.

Selecting Output Cable Type

Depending on the type of cable you have for your PS2, you will need to select a different output. On UK, USA and European machines (including Australia) follow the points below-

1. Turn on your PS2 console with no disc in the CD Drawer.
2. Use the D-Pad on your controller to select the option "System Configuration" and press the "CROSS" button.
3. Use the D-Pad on your controller to highlight "Component Video Out".
4. Use the D-Pad to select "RGB" or "Y/Cb/Pb Cr/Pr" depending on the cable you are using.

DVD Region Free will use whatever settings you have set up on the Playstation®2 to play the DVD disc.

9) Help Screens

Pressing "SELECT" on your game controller at any time whilst using

GameShark®2 Version 4 (excluding DVD Region Free) will display a "Help Menu" showing you the functions available and the corresponding buttons of your controller relevant to the screen you were on at the time you pressed "SELECT"

Pressing "F1" on your USB keyboard at any time whilst using GameShark®2 Version 4 (excluding DVD Region Free) will display a "Help Menu" showing you the functions available and the corresponding keys on your USB keyboard relevant to the screen you were on at the time you pressed "F1"

10) Frequently Asked Questions – GameShark Cheats

Q: At a certain point in my game when I have cheats activated, the game acts weird/freezes. Why is this?

A: When activated, some Cheat Codes make the game you are playing do things different to when it is being played without codes. For example, if you activate a "Make enemies not move" cheat, you may get to a point in the game where you need the enemies to move, in order for you to complete the game. This may cause the game to behave strangely.

Related Issues with Splinter Cell Cheats

The "Enemies Cannot Move" Cheat is should not be used on level 3 of Splinter Cell. This is because one of the enemies has to move in order for you to complete the level. It may cause the game to crash if the above event occurs.

Q: Why does my game not load/crash?

A: You may have too many codes activated - cut down on the amount you are trying to use.

Q: Will these codes cause my PlayStation®2 to malfunction or stop working?

A: Absolutely not. GameShark®2 Version 4 does not affect the PlayStation®2 itself; it merely changes addresses and values in a game's memory while the game is running. If a code causes an undesirable effect in a game, simply press the reset button and make sure the codes were entered properly.

Q: Is GameShark®2 Version 4 compatible with PlayStation/PSone memory cards?

A: No. Only PlayStation®2 compatible memory cards are powerful enough to be used with.

Q: Will the GameShark®2 Version 4 allow me to play import titles on my PlayStation®2?

A: No, the GameShark®2 V2 was not designed to allow the use of import titles on the PlayStation®2.

Q: Some codes I've found do not work on my. What do I do?

A: First verify that the code was entered correctly. If it still does not work, then check your source. We only guarantee GameShark®2 Version 4 codes that are published by www.gameshark.com

Q: My GameShark®2 Version 4 does not work on my PlayStation or PSone?

A: GameShark®2 Version 4 is designed for use on PlayStation 2 only.

Q: Does GameShark®2 Version 4 play games from Europe or Japan?

Q: Does GameShark®2 Version 4 play copied games?

A: No. GameShark®2 Version 4 will only play original NTSC PlayStation 2 games intended for the USA.

Q: The GameShark®2 Version 4 does not contain any cheats for my game?

A: The cheats you are looking for may be available on www.gameshark.com. If not, keep an eye on the website as codes for the particular game may appear at some point.

Q: I've entered some cheats from your website and they don't work! Why?

A: For all PlayStation 2 games, you must enter the Mastercode otherwise the cheat will fail. Also, ensure that all the codes for the particular cheat are entered correctly and ensure the codes are for the correct game.

Q: I've found some GameShark cheats and tried them and they do not work. Why?

A: Ensure that the codes are from the official GameShark website, www.gameshark.com, or are from another official source such as PlayStation 2 magazines.

11) Frequently Asked Questions – GameShark Memory Manager / Game Saves

Q: I tried zipping a Game save but it said "This type of file unsupported". I also tried to copy it to another memory card but it came up with the same message. Why?

A: Unfortunately, some game save data cannot be zipped or copied. This is down to the individual game and some game save data will not be compatible with the GameShark Memory Manager.

Q: My game won't load my zipped game saves (Aqua colour). Why?

A: No game can load zipped game save files. The game saves must be un-zipped using the GameShark Memory Manager before they are used with a game. This is so that the game can recognize it.

Q: Can I download a save from the CD onto my memory card, if I already have a save for that game on the memory card?

A: Some games will not allow for multiple game saves of the same game to be stored on a single memory card, so you may have to store multiple saves for certain games on separate memory cards. Another way of storing more than 1 save per game on your memory card is to zip your existing saves for your particular game, then download your new save. This will allow you to have multiple saves for the same game on your memory card.

Q: Why won't the GameShark Memory Manager recognize my memory card?

A: The GameShark Memory Manager can only be used with officially licensed Sony PlayStation®2 8MB memory cards. It will not work with any other memory card.

Q: I used the Game Saves section to download lots of Game Saves to my PlayStation®2 memory card, but now it says "Not enough free space on PS2 memory card". What does this mean?

A: This means your PlayStation®2 memory card has no free save space. Use GameShark Memory Manager to delete or zip some of your saves to free up some space. You can see how full your memory card is by looking at the memory bar underneath the Memory Manager side of the screen. Maximum capacity is 8000k.

Q: If I have an existing Game Save, can I unlock cheats for that existing Game Save, or do I have to start a new game to unlock the cheats?

A: If you have an existing Game Save, you can unlock cheats within your existing Game Save. If you choose to start from the beginning, you can unlock cheats for a new game as well.

12) Frequently Asked Questions – DVD Region Free

Q: The DVD Region Free screen appears but when trying to start the DVD the screen simply goes black, or back to the main Sony screen. Why is this?

A: Make sure you remember to swap your DVD Region Free disc with your DVD. If the problem persists, ensure you are following the above instructions carefully.

Q: Can I play other imports, like games, as well as DVDs?

A: No DVD Region Free is for playing import DVDs only.

Q: Does DVD Region Free play with RCE protected Movies?

A: DVD Region Free plays all region movies released to date, including RCE titles.

Q: Does DVD Region Free play PAL and NTSC?

A: You can play NTSC DVDs on a European PS2 but you cannot play PAL DVDs on an NTSC PlayStation 2

Q: DVD Region Free does not work on my PlayStation of Psone?

A: DVD Region Free is designed for use on PlayStation 2 only.

Q: I have a two DVD movie and when I eject the first DVD to insert the second DVD the screen goes black and does nothing. Why?

Q: When I've finished watching one DVD can I put another straight in?

A: Due to the way DVD Region Free works you must always re-load it before playing any DVD. This includes the 2nd or 3rd DVD of the same movie.

13) Frequently Asked Questions – USB Keyboard

Q: Why does my keyboard not work?

A: Only an official GameShark keyboard will work with this product.

Q: Why do I have to have a GameShark USB keyboard?

A: There are literally hundreds of different keyboards out there and to be able to support each one would slow down our service to you, the customer. By only supporting the GameShark keyboard we can help resolve any queries quickly.

Q: My keyboard doesn't work! Why is this?

A: Make sure it's plugged in.

Q: Someone told me I couldn't plug the keyboard in while the PS2 is on. Why is this?

A: This is untrue. You can plug the keyboard in at any time.

Q: I plugged my keyboard into a USB extension cable and it doesn't work. Why is this?

A: We recommend that the USB keyboard is plugged directly into the PS2

Q: Does it matter which USB port I plug the keyboard into?

A: No, the USB keyboard works in both upper and lower USB ports.

Q: Why does my keyboard not work in my game?

A: The keyboard is for use with the GameShark®2 Version 4 or higher only.

Q: I pulled the keyboard out while the PS2 can I plug it back in while it's on?

A: Yes, this will not cause any problems.

Q: Do I have to use my controller to navigate the GameShark Menu's?

A: No, you can operate the entire GameShark from the keyboard.

Q: Will my controller still work with the keyboard in?

A: Yes, the controller will still work in the GameShark even if the keyboard is plugged in.

Q: Will my GameShark keyboard work in my PC?

A: This is not supported. We recommend the GameShark keyboard only for use with the GameShark®2 Version 4 or higher

Q: Will my keyboard work with earlier versions of GameShark?

A: No, Keyboard support is a new feature added in GameShark 2 v4.

14) Customer Support

Please refer to the Frequently Asked Questions in the previous section before contacting our customer service department.

If you still cannot resolve the problem, please contact us as follows:

Phone: (800) 659-2287

E-Mail: support@gameshark.com

World Wide Web: <http://www.gameshark.com>

Mailing Address:

MadCatz, Inc.

ATTN: GameShark Support

7480 Mission Valley Road Suite 101

San Diego, CA 92108

Warranty Information

To obtain warranty service within the warranty period:

IN THE USA: Return product to the place of purchase or send the defective item postage prepaid with a copy of the sales receipt, return address and a brief description of the problems you are experiencing to the above address.

©2003 Mad Catz, Inc. 7480 Mission Valley Rd., Suite 101, San Diego, CA 92108-4406. ©2003 Mad Catz, Inc. GameShark, the GameShark logo and Wanna Beat the Game are trademarks or registered trademarks of Mad Catz, Inc., its subsidiaries and affiliates. GameShark codes ©1996-2003 Mad Catz, Inc. Features, appearance and specifications may be subject to change without notice. PS one and PlayStation are trademarks or registered trademarks of Sony Computer Entertainment, Inc. (SCEI). This product is not sponsored, endorsed or approved by SCEI.