

INSTRUCTION MANUAL FOR



GAMESAVES

For use with the Nintendo® GameCube™
Game Console

GAMESAVES for GAMECUBE™ USER GUIDE

INTRODUCTION

Congratulations! You have purchased the ultimate game enhancer for the Nintendo® GAMECUBE™ that will provide you with everything that you need to beat the game and manage your game saves!! To get the most out of your GAMESAVES for GAMECUBE™, please visit us at www.gameshark.com to register your GAMESAVES for GAMECUBE™ and receive all of the benefits of being a member and to get all of the hottest game saves for the latest games!!!

GAMESAVES for GAMECUBE™ comes supplied with over 150 game saves, specially created for your own use. You can use the online feature of GAMESAVES for GAMECUBE™ to download the coolest game saves available for your games from the dedicated website, www.gameshark.com, allowing you to unlock levels, have tons of cash, and unlock secret characters.

GAMESAVES for GAMECUBE™ lets you back-up all the game saves you have stored on your GAMECUBE™ Memory Cards to your PC, meaning you can free up valuable space on your GAMECUBE™ Memory Cards! You can also delete any game saves you no longer require at the click of a mouse button.

1) GETTING STARTED

a) Requirements

To use GAMESAVES for GAMECUBE™ you must have a PC running Windows 98SE or above with 30MB hard disk space free.

It is advisable to have over 100MB of disk space free for storing your game saves. You will need a CD-ROM drive and one free USB port.

A PC modem and account with an Internet service provider (ISP) or a dial-up Internet connection is required to use GAMESAVES for GAMECUBE™ online features.

b) Setting up GAMESAVES for GAMECUBE™ for the First Time

1. Insert the GAMESAVES for GAMECUBE™ disc into the CD drive of your PC and close the drawer.
2. After a few seconds, the installation launch panel will appear. If the launch panel does not automatically appear, double-click on the My Computer icon, then double-click on the CD-ROM icon, and lastly double-click on the SETUP.EXE file to bring up the launch panel.
3. Follow the onscreen prompts to install GAMESAVES for GAMECUBE™ onto your PC.

c) Connecting the Supplied USB Cable and GAMECUBE™ USB Memory Card

1. Make sure you have the "GAMESAVES for GAMECUBE™" CD inserted in your CD-ROM drive of your PC.
2. Connect the USB cable to a spare USB socket usually located at the back of your PC and to the supplied GAMECUBE™ USB Memory Card. Do not connect the supplied GAMECUBE™ USB Memory Card to your GAMECUBE™ and PC at the same time.
3. Windows should now detect new hardware being connected to your PC and may ask you for a path where to find the required USB drivers.
4. The path of the required drivers can be found in the "Drivers" folder on the "GAMESAVES for GAMECUBE™" CD.

5. Once drivers have finished installing, restart your PC.
6. Once the drivers have successfully been installed, you will not be required to install the drivers again.

d) Disconnecting the Supplied GAMECUBE™ USB Memory Card from your PC

Always check you have shutdown the GAMESAVES for GAMECUBE™ application on your PC before disconnecting the GAMECUBE™ USB Memory Card from the supplied USB cable and PC.

e) Starting-up the GAMESAVES for GAMECUBE™ Interface

1. Make sure you have the supplied USB cable and GAMECUBE™ USB Memory Card correctly connected to a spare USB socket on your PC.
2. Double-click the GAMESAVES for GAMECUBE™ icon on your PC.

PLEASE NOTE: DO NOT disconnect the GAMECUBE™ USB Memory Card while using GAMESAVES for GAMECUBE™ and never have the supplied GAMECUBE™ USB Memory Card connected to your PC and GAMECUBE™ at the same time.

2) AN OVERVIEW OF GAMESAVES FOR GAMECUBE™ INTERFACE

When you first start your GAMESAVES for GAMECUBE™ software, you will be presented with an interface consisting of two different panels as shown below. Details of each panel and its functions are explained in more detail below:

a) PC Panel

This is the left panel that displays all the game saves stored on your PC. The game saves are stored in Group Folders so you can manage your own game saves by simply grouping them together. Game saves can also be copied or moved into different Group Folders within the PC Panel.

b) Memory Card Panel

This is the panel on the right and displays game saves, which are stored on the GAMECUBE™ USB Memory Card that is connected to your PC via the supplied USB cable.



1. **Group Folder** – These are the folders that contain the game saves stored on the PC.
2. **Game Saves** – These are the actual game save files that are stored on the PC.
3. **Edit** – This button allows you to edit Group Folder names and Game Save Descriptions of the game saves stored within the PC Panel.
4. **Delete** – This button will delete any highlighted game save(s).

5. **Status** – This button shows useful information about the number of game saves stored on the PC and properties of the currently connected GAMECUBE™ USB Memory Card such as number of blocks free and the number of game saves it currently stores.
6. **Minimize** – This button minimizes the GAMESAVES for GAMECUBE™ application into your Taskbar.
7. **Exit** – This button shuts down the GAMESAVES for GAMECUBE™ application.
8. **Refresh** – Refreshes the Memory Card Panel displaying the contents of the currently connected GAMECUBE™ USB Memory Card.
9. **Memory Card Panel** – This panel displays all the game saves that are currently stored on the connected GAMECUBE™ USB Memory Card.
10. **Memory Card Capacity Bar** – This bar shows how much free space is available on the connected GAMECUBE™ USB Memory Card.
11. **Memory Card Save Information Panel** – This box displays useful game save information for the selected game save stored on the connected GAMECUBE™ USB Memory Card.
12. **GameShark Icon** – This button will display general information about the product.
13. **WWW** – This button will take you to www.gameshark.com.
14. **Back up Memory Card** – This button copies the entire contents of the connected GAMECUBE™ USB Memory Card to the PC.
15. **Copy -> PC** – This button copies highlighted game saves from the Memory Card Panel to the PC.
16. **Erase Memory Card** – This button erases the entire contents of the connected GAMECUBE™ USB Memory Card.
17. **Copy -> Memory Card** – This button copies highlighted game saves from the PC Panel to the connected GAMECUBE™ USB Memory Card.
18. **PC Panel Save Information Panel** – Displays game save information for the currently selected game save in the PC Panel.
19. **PC Panel** – This panel displays all the game saves you have stored on the PC.
20. **Network** – Opens the Internet Connection Panel, used to connect to the GAMECUBE™ section of GameShark® website to find new game saves.

3) MANAGING GAME SAVES ON THE PC

GAMESAVES for GAMECUBE™ allows you to store and manage all your game saves you have for the GAMECUBE™ on your PC. You can quickly and easily copy, delete and backup game saves with the supplied USB Cable and GAMECUBE™ USB Memory Card.

You can then rename and add Game Save Descriptions to help you compile your own collection of game saves stored on your PC that can be quickly transferred back to the supplied GAMECUBE™ USB Memory Card for use at any time.

The following sections explain GAMESAVES for GAMECUBE™ numerous functions and capabilities in detail so you can begin to manage your game saves right away.

a) Group Folders

On the PC Panel, all the game saves are stored in Group Folders, which are designed to make it easier for you to manage the game saves stored on your PC. E.g. you could have a Group Folder named “Game X” and only store game saves for “Game X” inside.

You can open and close the Group Folders by simply double-clicking on them to show or hide the game saves stored inside them.

b) Creating Group Folders

To create a new Group Folder simply double-click left button while the mouse cursor is in any blank space within the PC Panel. A dialogue box will appear allowing you to enter a name for a new Group Folder.

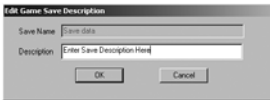
c) Editing Group Folder Names

To edit a Group Folder name, simply use the mouse to highlight a Group Folder then click on the 'EDIT' button. A dialogue box will appear allowing you to edit the Group Folder name.

d) Editing Game Save Descriptions

When you highlight a game save in the PC Panel, useful information is displayed in the Information box below such as File Size, Save Name, Game Name and a Game Save Description.

GAMESAVES for GAMECUBE™ allows you to add or edit Game Save Descriptions so you can easily identify each game save more easily. This is a useful function and allows you to identify each game save for the same game, for example you could enter a Game Save Description such as "Level 5 unlocked with all weapons".



Follow the steps below to edit the Game Save Description.

1. Use the mouse to click and highlight the game save you wish to edit.
2. Now use the mouse to click on the '**Edit**' button. Double-clicking the selected game save also performs this same action.
3. The "**Edit Game Save Description**" dialog box as shown above will now appear.
4. Now enter a short description of the game save in the "Description" box. This will help you distinguish between your game saves.
5. Once you are happy with your Game Save Description, click '**OK**'.

e) Deleting Game Saves Stored on the PC

Once you have deleted a game save file it cannot be recovered! Please use this function with caution, especially if you don't have a backup of your game saves.

To delete game saves from the PC Panel, simply use the mouse to highlight the game save you wish to delete and press the 'DELETE' key on your keyboard or use the mouse and click the 'Delete' button.

TIP

To delete more than one game save at a time, simply hold down the 'Ctrl' button on your keyboard while selecting the game saves you want to delete. Now when you delete, all the highlighted game saves will be deleted together.

4) MANAGING GAME SAVES ON YOUR GAMECUBE MEMORY CARDS

GAMESAVES for GAMECUBE™ has several functions that allow you to keep your GAMECUBE™ game saves in good order.

You can back-up and delete individual game saves from the supplied GAMECUBE™ USB Memory Card and even perform a full erase.

Before you can use any of these functions you will need to know how to view the game saves stored on your GAMECUBE™ USB Memory Card within the GAMESAVES for GAMECUBE™ interface.

a) Viewing Game Saves Stored on the GAMECUBE™ USB Memory Card

Follow the simple steps below to learn how to view the game saves stored on GAMECUBE™ USB Memory Card with the GAMESAVES for GAMECUBE™ interface:

1. Make sure you already have GAMESAVES for GAMECUBE™ running on your PC and have correctly installed the drivers for the supplied GAMECUBE™ USB Memory Card before continuing (refer to the Getting Started section).
2. Attach the GAMECUBE™ USB Memory Card you wish to view to the supplied USB PC to GAMECUBE™ Memory Card Cable.
3. The GAMECUBE™ USB Memory Card should now be detected and any game saves stored should now appear on the Memory Card Panel.
4. A progress bar will appear, as the Memory Card Panel starts to show what game saves are stored on the GAMECUBE™ USB Memory Card.
5. If no progress bar appears, use the mouse to click the 'Refresh' button, this will refresh all panels and you should now see the game saves that are stored on your GAMECUBE™ USB Memory Card.

PLEASE NOTE: DO NOT disconnect the GAMECUBE™ USB Memory Card while using GAMESAVES for GAMECUBE™ and never have the supplied GAMECUBE™ USB Memory Card connected to your PC and GAMECUBE™ at the same time.

b) Making Backups of the GAMECUBE™ USB Memory Card

You can use GAMESAVES for GAMECUBE™ to make a backup of the entire GAMECUBE™ USB Memory Card. Simply follow the steps below:

1. Attach the GAMECUBE™ USB Memory Card you wish to backup to your PC via the supplied USB Cable.
2. A progress bar will appear, as the Memory Card Panel starts to show what game saves are stored on the GAMECUBE™ USB Memory Card.
3. If no progress bar appears, use the mouse to click the 'Refresh' button, this will refresh all Panels and you should now see the game saves that are stored on your GAMECUBE™ USB Memory Card.
4. Use the mouse to click on the **'Back-up Memory Card'** button.
5. An **'Enter Group Folder Name'** dialogue box will appear, asking you what you wish to name the Group Folder of where the game saves will be backed up.
6. Enter a Group Folder name and then use the mouse to click **'OK'**.
7. A progress bar will appear while the GAMECUBE™ USB Memory Card is backed up to PC.
8. Once the progress bar closes, your GAMECUBE™ USB Memory Card will now be backed up in the Group Folder you specified. The original game saves will remain on the GAMECUBE™ USB Memory Card.

c) Deleting Game Saves on the GAMECUBE™ USB Memory Card

Once you have deleted a game save file it cannot be recovered! Please use this function with caution, especially if you don't have a backup of your game saves. See the section above for details of how to backup.

Follow the steps below to delete your game saves:

1. Attach the GAMECUBE™ USB Memory Card you wish to backup to your PC via the supplied USB Cable.
2. A progress bar will appear, as the Memory Card Panel starts to show what game saves are stored on the GAMECUBE™ USB Memory Card.
3. If no progress bar appears, use the mouse to click the 'Refresh' button, this will refresh all Panels and you should now see the game saves that are stored on your GAMECUBE™ USB Memory Card.
4. Once the progress bar is complete, use the mouse to click on a game save that you wish to delete from the Memory Card Panel.
5. To delete the game save either press the 'Delete' button on your keyboard or use the mouse to click the 'Delete' button on the GAMESAVES for GAMECUBE™ interface.
6. A message box will appear asking "Delete Game Save(s)?"
7. If you wish to delete the game save click 'OK' and the game save will now be deleted.
8. If you do not wish to delete the game save click 'Cancel' and you will return to the GAMESAVES for GAMECUBE™ interface.

To delete more than one game save at a time, simply hold down the 'Ctrl' button on your keyboard while selecting the game saves you want to delete. Now when you delete, all the highlighted game saves will be deleted together.

If you want to delete all the game saves off your GAMECUBE™ USB Memory Card, simply use your mouse to click the 'ERASE MEMORY CARD' button.

PLEASE NOTE: Any game saves which are deleted from your GAMECUBE™ USB Memory Card will be lost forever, so make sure you want to do so or make a backup on your PC.

5) COPYING GAMECUBE™ GAME SAVES TO PC

GAMESAVES for GAMECUBE™ can only copy game saves from the supplied GAMECUBE™ USB Memory Card and not from any other GAMECUBE™ Memory Card.

If you have any game saves on a different GAMECUBE™ Memory Card that you wish to copy to PC, please copy them to the supplied GAMECUBE™ USB Memory Card first.

You can easily do this by inserting the GAMECUBE™ USB Memory Card and your normal GAMECUBE™ Memory Card into your GAMECUBE™, then use the game save copying functions of your GAMECUBE™ to transfer your game saves onto the supplied GAMECUBE™ USB Memory Card. (Refer to your GAMECUBE™ manual for details of how to do this).

You will only be able to store a maximum of 127 game saves on the supplied GAMECUBE™ USB Memory Card, this is a limit of the GAMECUBE™ itself in that it will not allow anymore than 127 game saves on any GAMECUBE™ Memory Card at any one time.

PLEASE NOTE: DO NOT disconnect the GAMECUBE™ USB Memory Card while using GAMESAVES for GAMECUBE™ and never have the supplied GAMECUBE™ USB Memory Card connected to your PC and GAMECUBE™ at the same time.

Some games have protected game saves that cannot be copied from one memory card to another. However, if you save the game save directly onto the supplied GAMECUBE™ USB Memory Card from the game, GAMESAVES For GAMECUBE™ will

allow you to copy the game save to and from your PC.

There are two ways to copy game saves from the supplied GAMECUBE™ USB Memory Card to the PC. These are both described below:

a) Copying Game Saves Using the 'Copy -> PC' Button

1. Attach the GAMECUBE™ USB Memory Card you wish to copy game saves from to your PC via the supplied USB Cable.
2. A progress bar will appear, as the Memory Card Panel starts to show what game saves are stored on the GAMECUBE™ USB Memory Card.
3. If no progress bar appears, use the mouse to click the **'Refresh'** button, this will refresh all Panels and you should now see the game saves that are stored on your GAMECUBE™ USB Memory Card.
4. Once the progress bar is complete, you can begin to highlight the game save you want to copy to the PC. Simply place your mouse cursor over a game save on the Memory Card Panel (Right panel) and click on it. The game save will now be highlighted.
5. Use the mouse to click the **'Copy -> PC'** button.
6. An **'Enter Group Folder Name'** dialogue box will appear, asking you what you wish to name a new Group Folder.
7. Enter a Group Folder name and then use the mouse to click **'OK'**. A progress bar will appear while the game save is being transferred.
8. The game save will now be transferred to the PC, saved in the Group Folder you have just created. The original game save will remain on the GAMECUBE™ USB Memory Card.

Tip

To transfer more than one game save at a time between panels, simply hold down the **'Ctrl'** button on your keyboard while selecting the game saves you wish to transfer. All the game saves will be highlighted. Now simply press the **'Copy -> PC'** button and all the highlighted game saves will be transferred.

b) Copying Game Saves Using the "Drag and Drop" Method

1. Attach the GAMECUBE™ USB Memory Card you wish to copy game saves from to your PC via the supplied USB Cable.
2. A progress bar will appear, as the Memory Card Panel starts to show what game saves are stored on the GAMECUBE™ USB Memory Card.
3. If no progress bar appears, use the mouse to click the **'Refresh'** button, this will refresh all Panels and you should now see the game saves that are stored on your GAMECUBE™ USB Memory Card.
4. Once the progress bar is complete, use the mouse to highlight the game save you wish to copy from the Memory Card Panel.
5. With the mouse cursor over the selected game save, press and hold the left mouse button down and simply drag the game save onto to the desired Group Folder on the PC Panel. Release the left mouse button and a progress bar will appear while the game save is being transferred. The game save will now be transferred to the PC and saved in your chosen Group Folder. The original game save will remain on the GAMECUBE™ USB Memory Card
6. If you do not drag the game save onto an existing Group Folder, you will be asked to **"Enter Group Folder Name"**, if this is the case, enter a new Group Folder name and then use the mouse to click **'OK'**. A progress bar will appear while the game save is being transferred. The game save will now be transferred to the

PC and saved in the Group Folder you have just created. The original game save will remain on the GAMECUBE™ USB Memory Card.

Tip

To transfer more than one game save at a time between panels, simply hold down the 'Ctrl' button on your keyboard while selecting the game saves you wish to transfer. All the game saves will be highlighted. Now simply press and hold the left mouse button down whilst the cursor is over a highlighted game saves and "drag" the game saves to the PC panel (Left). All the game saves will be transferred.

6) COPYING GAME SAVES FROM PC TO THE GAMECUBE™ USB MEMORY CARD

GAMESAVES for GAMECUBE™ can only copy game saves from your PC to the supplied GAMECUBE™ USB Memory Card, not to any other GAMECUBE™ Memory Card.

If you wish to copy the game saves on your PC to a different GAMECUBE™ Memory Card, you will need to copy them to the supplied GAMECUBE™ USB Memory Card first.

Then transfer the game saves stored onto the supplied GAMECUBE™ USB Memory Card by inserting both the GAMECUBE™ USB Memory Card and your normal GAMECUBE™ Memory Card into your GAMECUBE™. Then use the game save copying functions of your GAMECUBE™ to transfer your game saves to another GAMECUBE™ Memory Card. (Refer to your GAMECUBE™ manual for details of how to do this).

You will only be able to store a maximum of 127 game saves on the supplied GAMECUBE™ USB Memory Card, this is a limit of the GAMECUBE™ itself in that it will not allow anymore than 127 game saves on any GAMECUBE™ Memory Card at any one time.

PLEASE NOTE: DO NOT disconnect the GAMECUBE™ USB Memory Card while using GAMESAVES for GAMECUBE™ and never have the supplied GAMECUBE™ USB Memory Card connected to your PC and GAMECUBE™ at the same time.

There are two ways to copy game saves from your PC to the supplied GAMECUBE™ USB Memory Card. These are both described below:

a) Copying Game Saves Using the 'Copy -> Memory Card' Button

1. Attach the GAMECUBE™ USB Memory Card you wish to copy game saves to your PC via the supplied USB Cable.
2. A progress bar will appear as the Memory Card Panel starts to show what game saves are stored on the GAMECUBE™ USB Memory Card.
3. If no progress bar appears, use the mouse to click the 'Refresh' button. This will refresh all Panels and you should now see the game saves that are stored on your GAMECUBE™ USB Memory Card.
4. Once the progress bar is complete, you can begin to highlight the game save you want to copy from the PC. Simply put your mouse cursor over a game save on the PC Panel (Left panel) and click on it. The game save will now be highlighted.
5. Use the mouse to click the 'Copy -> Memory Card' button. A progress bar will appear while the game save is being transferred.
6. The game save will now be transferred to the GAMECUBE™ USB Memory Card. The original game save will remain on the PC.

Tip

To transfer more than one game save at a time between panels, simply hold down the 'Ctrl' button on your keyboard while selecting the game saves you wish to transfer. All the game saves will be highlighted. Now simply press the 'Copy -> Memory Card' button and all the highlighted game saves will be transferred.

b) Copying Game Saves Using the "Drag and Drop" Method

1. Attach the GAMECUBE™ USB Memory Card you wish to copy game saves to your PC via the supplied USB Cable.
2. A progress bar will appear as the Memory Card Panel starts to show what game saves are stored on the GAMECUBE™ USB Memory Card.
3. If no progress bar appears, use the mouse to click the 'Refresh' button. This will refresh all Panels and you should now see the game saves that are stored on your GAMECUBE™ USB Memory Card.
4. Once the progress bar is complete, use the mouse to highlight the game save you wish to copy from the PC Panel.
5. With the mouse cursor over the selected game save, press and hold down the left mouse button down and simply drag the game save onto to the Memory Card Panel.
6. Release the left mouse button and the game save will be copied to the GAMECUBE™ USB Memory Card. A progress bar will appear while the game save is being transferred.
7. The game save will now be transferred to the GAMECUBE™ USB Memory Card. The original game save will remain on the PC.

Tip

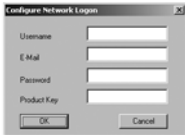
To transfer more than one game save at a time between panels, simply hold down the 'Ctrl' button on your keyboard while selecting the game saves you wish to transfer. All the game saves will be highlighted. Now simply press and hold the left mouse button down while the cursor is over a highlighted game save and "drag" the game saves to the Memory Card Panel (Right). All the game saves will be transferred.

6) DOWNLOAD THE LATEST GAME SAVES AND CHEATS

If you have Internet access on your PC, GAMESAVES for GAMECUBE™ can connect directly to our dedicated GAMECUBE™ site, allowing you to download the latest and hottest GAMESAVES for GAMECUBE™ available. Viewing and downloading GAMECUBE™ game saves from the GameShark website server has never been so easy. You can search for the game saves you want using the GAMESAVES for GAMECUBE™ advanced Internet Search functions at www.gameshark.com.

a) Accessing the Internet Connection for the First Time

When you first select the 'Network' button that is located on the left side of the PC Panel, a dialogue box will appear asking you for a Username, E-mail address, Password and Product Key.



The image shows a standard Windows-style dialog box titled "Configure Network Logon". It has a close button (X) in the top right corner. Inside the dialog, there are four text input fields stacked vertically, labeled "Username", "E-Mail", "Password", and "Product Key". At the bottom of the dialog, there are two buttons: "OK" on the left and "Cancel" on the right.

Please check you have entered the correct Product Key and a valid e-mail address to access the online features of GAMESAVES for GAMECUBE™.

Once you have entered all your details and the Product Key, click on 'OK' and the Internet Connection Panel will slide out to the left.

If you wish to change any of your details at later date such as your contact e-mail address, click on the 'CONFIGURE' button found at the bottom of the Internet Connection Panel.

PLEASE NOTE: Once you have successfully registered and logged in to use the online features, you cannot change your Username or Password. Make a note of all the details you enter and keep them in a safe place for reference.

b) Internet Connection Panel Overview

The Internet Connection Panel looks like this:



- 1. Internet Connection Panel** – This panel displays the results of your search.
- 2. Close** – This button will close the Internet Connection Panel.
- 3. Search Icon** – Clicking this icon will allow you to search the www.gameshark.com database of GAMECUBE™ game saves.
- 4. Configure** – Allows you change your User Name, Password, E-mail and Product Key details.
- 5. Internet Connection Panel Game Saves Information Panel** – This box shows the game name and Game Save Description of a highlighted game save.

c) The Search Function

Follow the steps below to learn how to search for new game saves using the GAME-SAVES for GAMECUBE™ online search function:

Web Database Search

Game Name

Search Term Exact

Date 11/26/03 12:19:21 Before

OK Cancel

1. Use the mouse to click on the Search Icon in the bottom right of the Internet Connection Panel. A search dialog box will appear as shown above.
2. Enter the name of the game you want to search for in the "Game Name" box: E.g. "Splinter Cell".
3. Use the mouse to click on 'OK' and GAMESAVES for GAMECUBE™ will now perform an online search for your game name on the GAMECUBE™ GameShark server.
4. Search results will be displayed in the Internet Connection Panel. If you do not find what you are after, you may want to make a more advanced search (see Advanced Searches below).
5. Remember you can use the mouse to highlight any of the files listed from the search results displayed in the Internet Connection Panel to view extra information such as Game Save Descriptions, file size, and dates created.

d) Advanced Searches

Simply read the following information below to learn how to perform advanced searches.

The "Search Term" option allows you to search for certain terms such as "Unlimited", the dropdown box gives you different options of how your entered search term is used, and these are explained below:

1. **Exact** – This search will only return results that match exactly with your search term. This option will return the least results.
2. **Fuzzy** – This search will return results that are similar, but not exactly the same as the search term you entered. This option will return the most results, and is the best option if you are unsure of a game save name.
3. **Contains** – This search will return results that contain one or more of the words in your Search Term. This option is also a good option if you are unsure of a game save name.

The 'Date' option allows you to search for Saves by date. Simply enter a date in the 'Date' box (it will currently display today's date/time), the dropdown box gives you different options of how you can search the date, these are explained below:

1. **Before** – This search will return game saves that were uploaded to the GameShark server before the date you have entered.
2. **After** – This search will return game saves that were uploaded to the GameShark server after the date you have entered.
3. **On** – This search will return game saves that were uploaded to the GameShark server on the exact day you have entered.

e) Downloading Game Saves from the Internet Connection Panel

The game saves displayed in the Internet Connection Panel are on GameShark's servers; to use them you will have to download them to your PC before copying them to the supplied GAMECUBE™ USB Memory Card. Downloading these files is as simple as copying a game save to and from the PC & GAMECUBE™ USB Memory Card.

To download files from the Internet Connection Panel, simply move the mouse cursor over your chosen game save, press and hold the left mouse button and "drag" the file from the Internet Connection Panel into the PC Panel in the location where you wish to save it.

PLEASE NOTE: DO NOT disconnect the GAMECUBE™ USB Memory Card while using GAMESAVES for GAMECUBE™ and never have the supplied GAMECUBE™ USB Memory Card connected to your PC and GAMECUBE™ at the same time.

TIP

Downloading the files to your PC first means that the Game Save Descriptions or extra file information will stay intact; you can always copy it to your GAMECUBE™ USB Memory Card later. This also means you will always have a backup on your PC.

To download more than one file at a time, simply hold down the 'Ctrl' button on your keyboard while selecting the files you want to download. All the files will be highlighted. Now simply hold the mouse button down while the cursor is over one of your highlighted files to "drag" them where you want.

f) Browsing for Game Saves on www.gameshark.com

Alternatively you can browse the GameShark website at www.gameshark.com for the latest game saves, game reviews and information. Simply use your mouse and click the 'WWW' button found at the bottom of the Memory Card Panel.

7) FREQUENTLY ASKED QUESTIONS

Q: I have copied a file across from my PC to the GAMECUBE™ USB Memory Card, but it does not appear to be there. Why is this?

A: Try clicking the 'Refresh' button with your mouse. This will refresh the Memory Card Panel, and your game save should show up.

Q: I plugged in the GAMECUBE™ USB Memory Card and it was blank, why is this?

A: Plug the GAMECUBE™ USB Memory Card into your GAMECUBE™ and check there are game saves present. If there are game saves present, try re-attaching the GAMECUBE™ USB Memory Card then use the mouse to click the 'Refresh' button.

Q: I've loaded the software but it can't find the GAMECUBE™ USB Memory Card.

Q: Why does the Memory Card Panel display the message "No Memory Card"?

A: Make sure you have the supplied USB cable and GAMECUBE™ USB Memory Card connected correctly. (Refer to the "GETTING STARTED" section of this User Guide).

A: Try restarting GAMESAVES for GAMECUBE™ with the supplied GAMECUBE™ USB Memory Card disconnected. Once the application has re-started, re-attach the GAMECUBE™ USB Memory Card then use the mouse to click the 'Refresh' button.

Q: How do I plug in more than one Memory Card at a time?

A: You cannot. You can only plug in one Memory Card at a time.

Q: Why doesn't it work with Windows95 and Windows98?

A: These versions of Windows have been known to have issues with USB and today a majority of users are running Windows XP.

Q: I seem to have various problems when running your software.

A: We suggest that if you have Internet access, you should use Windows Updates to update your version of Windows. Microsoft continually develops Windows to improve and fix various issues. We therefore recommend you keep your version of Windows as up to date as possible.

Q: Does it matter which Memory Card port I use on my GAMECUBE™?

A: No.

Q: When I plug in the GAMECUBE™ USB Memory Card directly into a USB port on my machine it seems to be intermittent/fail to work.

A: Try using self a powered USB hub.

Q: Does it matter which USB port I plug the cable into on the PC?

A: No, but if you do have problems, try plugging into another USB port, preferably one at the back of your PC.

Q: Can I plug it into a USB2.0/USB Hi-Speed port?

A: Yes, although the cable with GAMECUBE™ USB Memory Card attached is a USB1.1 device.

Q: Can I plug the cable into a USB hub?

A: Yes, if you have any problems, try plugging it directly into a USB port on your PC.

Q: When I plug the cable into a hub, it seems to be intermittent/fail to work.

A: Although it should work through a hub, various factors could cause it to be unreliable. If you have any problems, try plugging it directly into a USB port on your PC.

Q: Can I use a USB extension cable?

A: Yes, if you have any problems, try plugging it directly into a USB port on your PC.

Q: Will this product cause damage to my Memory Card?

A: No.

Q: Will this product cause damage to my GAMECUBE™?

A: No.

Q: Will I get free upgrades to the software?

A: Major versions will be released as new products, but minor versions may be released for free as an upgrade at GameShark's discretion. Keep checking our web site for any information at www.gameshark.com.

Q: Can I use game saves from other sites with GAMESAVES for GAMECUBE™?

A: No, you can only use game saves for GAMESAVES for GAMECUBE™ from GameShark.

Q: When I connect to the Internet side of GAMESAVES for GAMECUBE™, will it give out information about my PC or me?

A: No, it will only ask for your username, password, e-mail address and product key. We use this information in order to keep our services and products secure and to provide you with support should you experience any difficulties.

Q: Why can't I have more than 127 game saves on my GAMECUBE™ USB Memory Card even though there is plenty of space remaining?

A: This is a limit of the GAMECUBE™ itself in that it will not allow anymore than 127 game saves, on any GAMECUBE™ Memory Card at any one time.

Q: I copied a save across and it appeared as "\ " instead of the game name.

A: Delete the problem game save from the GAMECUBE™ USB Memory Card and copy it over again.

If this fails, copy over 10 saves that don't exist on the GAMECUBE™ USB Memory Card. Now copy the save you wish to use.

If the problem persists, delete the problem save and back up or copy any other game saves on the GAMECUBE™ USB Memory Card to the PC Panel. Now erase the GAMECUBE™ USB Memory Card. Copy the save you wish to use by itself to the GAMECUBE™ USB Memory Card and this should solve the issue.

Q: My game refuses to load a game save saying it is "corrupt".

A: Delete the problem game save from the GAMECUBE™ USB Memory Card and copy it over again.

If this fails, copy over 10 saves that don't exist on the GAMECUBE™ USB Memory Card. Now copy the save you wish to use.

If the problem persists, delete the problem save and back up or copy any other game saves on the GAMECUBE™ USB Memory Card to the PC Panel. Now erase the GAMECUBE™ USB Memory Card. Copy the save you wish to use by itself to the GAMECUBE™ USB Memory Card and this should solve the issue.

Q: My game refuses to recognize the GAMECUBE™ Memory Card.

A: Copy the save over to a normal GAMECUBE™ Memory Card and this should solve the problem.

Q: I've copied saves over from my Memory Card to the GAMECUBE™ USB Memory Card using the GAMECUBE™. When I load the save directly from the GAMECUBE™ USB Memory Card it says it's corrupted but its okay on my original Memory Card. Why?

A: This could be due to a variety of reasons. Delete the save and copy it across again. If this still fails to work, back up some of your saves from the GAMECUBE™ USB Memory Card onto your PC and delete them. Now copy your save from your Memory Card to the GAMECUBE™ USB Memory Card and this should solve the problem.

Q: The GAMECUBE™ won't allow me to copy my game save from my normal GAMECUBE™ Memory Card to the supplied GAMECUBE™ USB Memory Card, why is this?

A: Unfortunately this is due to the game itself. Some games have protected game saves that cannot be copied from one memory card to another. However, if you save the game save directly onto the supplied GAMECUBE™ USB Memory Card from the game, GAMESAVES For GAMECUBE will allow you to copy the game save to and from your PC.

Q: I have a suggestion that I think might be useful in this product.

A: Feel free to write or e-mail us, letting us know what you think about our product.

8) CUSTOMER SUPPORT

Please refer to the Frequently Asked Questions in the previous section before contacting our customer service department.

If you still cannot resolve the problem, please contact us as follows:

Phone: 619-683-2815

E-Mail: support@gameshark.com

World Wide Web: <http://www.gameshark.com/>

Mailing Address: Mad Catz, Inc.

ATTN: GameShark Support

7480 Mission Valley Road Suite 101

San Diego, CA 92108

Warranty Information

To obtain warranty service within the warranty period:

IN THE USA: Return product to the place of purchase or send the defective item postage prepaid with a copy of the sales receipt, return address and a brief description of the problems you are experiencing to the above address.

MADE IN HONG KONG ASSEMBLED IN THE UNITED STATES

©2004 Mad Catz, Inc. GameShark, the GameShark logo and Wanna Beat the Game are trademarks or registered trademarks of Mad Catz, Inc., its subsidiaries and affiliates.

GameShark saves ©2003 Mad Catz, Inc. Features, appearance and specifications may be subject to change without notice. GAMECUBE is a trademark of Nintendo. This product is not sponsored, endorsed or approved by Nintendo.